

BETTER ROADS CASE STUDY

CITY OF WOODSTOCK, GA

The City of Woodstock in Georgia identified their road assessment process was resulting in subjective data due to human error and was looking to find a simple and cost-effective way to generate objective ratings for their network.

Located in the heart of Georgia, the City of Woodstock is a growing community dedicated to going above and beyond with public services. With over 33,000 residents and a 111 centerline mile road network, managing and maintaining their infrastructure can be a daunting task.

For years, Woodstock faced challenges familiar to many municipalities when conducting manual road assessments. Their assessment process was subject to human error, which produced subjective data. The City of Woodstock knew it needed to find a simple and cost-effective way to generate objective ratings for their road network.

CHALLENGES

Before automating their road assessments, Woodstock relied on manual assessments using spreadsheets. Public Works employees maintained a spreadsheet listing road conditions based on observations and the last resurfacing date. This process was prone to human error and no fixed timeframe or specific budget.



CHALLENGES

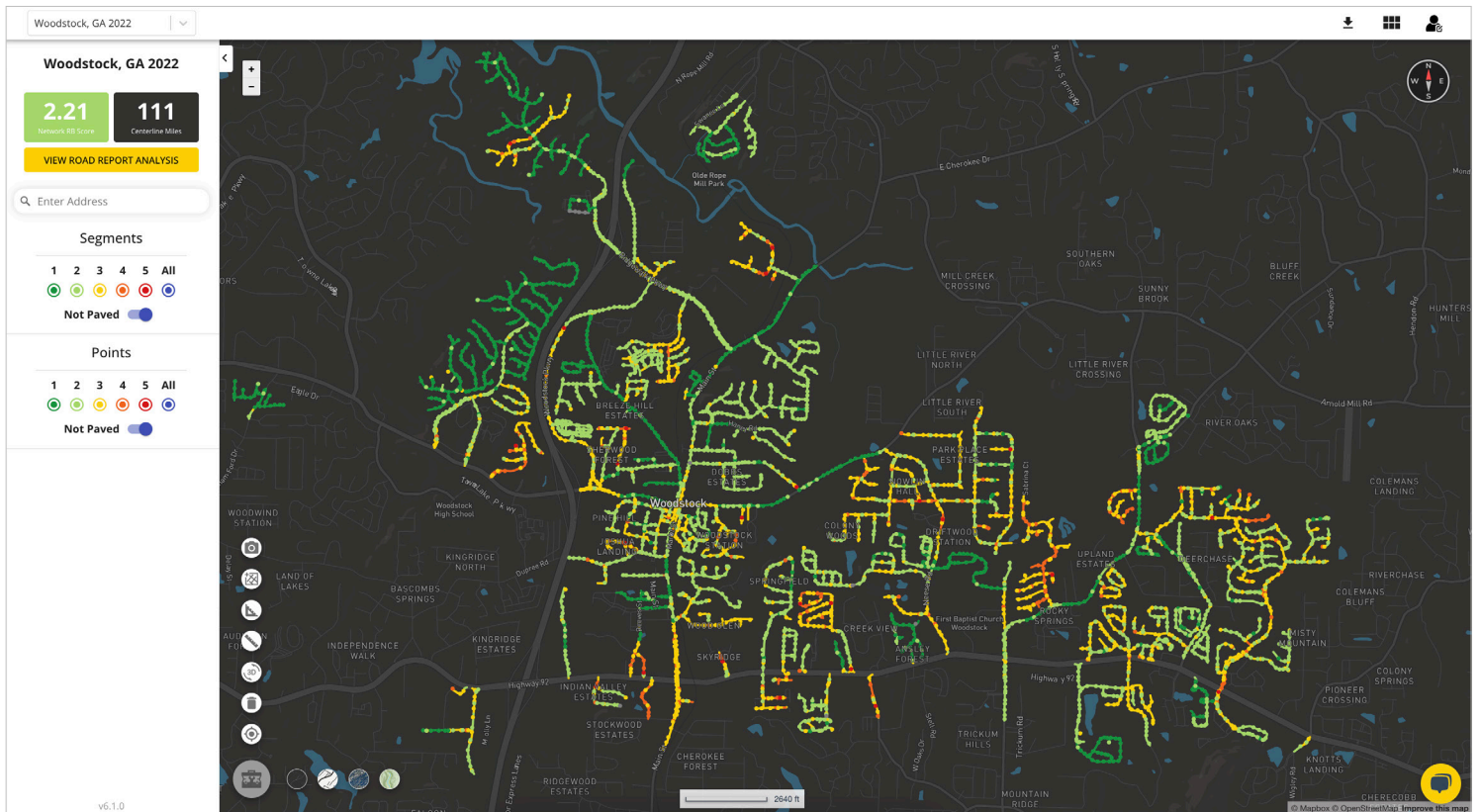
- Assessment process was prone to human error and inconsistency
- Had no timeframes or specified budget

SOLUTION

- Michelin Better Roads: Fast, objective, affordable road assessment

RESULTS

- Significantly reduced time and labor spent on assessments
- Objective and consistent assessment data
- Ability to track their long-term progress in the network.



Woodstock's road network as seen on the Better Roads pavement assessment platform

In terms of sustainability and accuracy, Woodstock realized the need for a data-driven approach. Relying on human observation was inconsistent, and spreadsheet updates were infrequent. All of these factors made it difficult to confidently present this data to stakeholders.

SOLUTION

With the adoption of Michelin Better Roads' technology, Woodstock was able to save time, stay under budget, and streamline its process. Compared to a similar service, Michelin Better Roads offered a more cost-efficient solution with similarly high-quality data. For data collection, one person could collect all necessary visual data in just a few days, and the full visual and ratings data set was available within a few weeks.

Michelin Better Roads played an influential role in Woodstock's pavement maintenance strategy. Yearly road assessments with objective ratings and

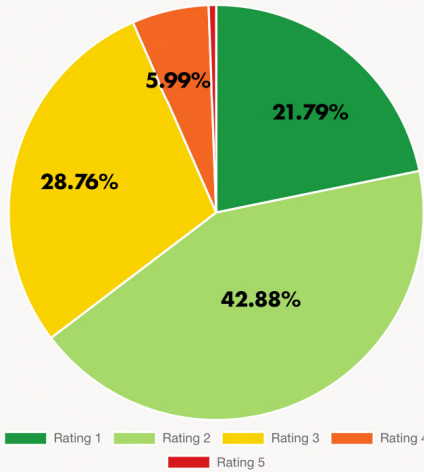
WITH OUR YEARLY ROAD ASSESSMENT, WE ARE ABLE TO UTILIZE THAT DATA TO HELP DETERMINE WHICH ROADS ARE IN MOST NEED OF REPAIR.

THE RESULTS FROM THE DATA COLLECTED HELPS US QUICKLY DETERMINE THE URGENCY OF THE REPAIRS NEEDED, WHILE ALLOWING US TO PRESENT THAT DATA TO OUR COUNCIL AND TO THE GEORGIA DEPARTMENT OF TRANSPORTATION WHEN APPLYING FOR VARIOUS STATE GRANTS.

- Bill Glennan
Project Coordinator, City of Woodstock

high-resolution imagery helped prioritize road repairs and secure state grants, streamlining decision-making and allowing for informed presentations to stakeholders.

NETWORK RATINGS BREAKDOWN



Woodstock's breakdown of their road ratings (left), and point imagery (right).

Michelin Better Roads' automated road assessment solution became a valuable asset for the City of Woodstock, primarily through providing objective data. Michelin Better Roads interactive platform enabled the city to easily identify areas for improvement, objectively analyze progress, and carefully make informed decisions. In addition, having access to previous assessments allowed them to track their long-term progress in the network overall.

RESULTS

The City of Woodstock was also able to use its automated assessment in an unconventional way. A local Boy Scouts of America troop used the visual data to identify damaged sidewalks and roadways within a neighborhood, confirming the accuracy of the data and benefiting the community.

The City of Woodstock has modernized its road assessment and pavement maintenance strategy through its decision to work with Michelin Better Roads. By delivering objective data, providing cost and time efficiency, and improving decision making, Michelin Better Roads has become an essential tool in Woodstock's mission to maintain high-quality roads for its community.

MICHELIN

MOBILITY INTELLIGENCE

Automate your road assessment process with artificial intelligence



info-mmi@micelin.com



mobilityintelligence.michelin.com